






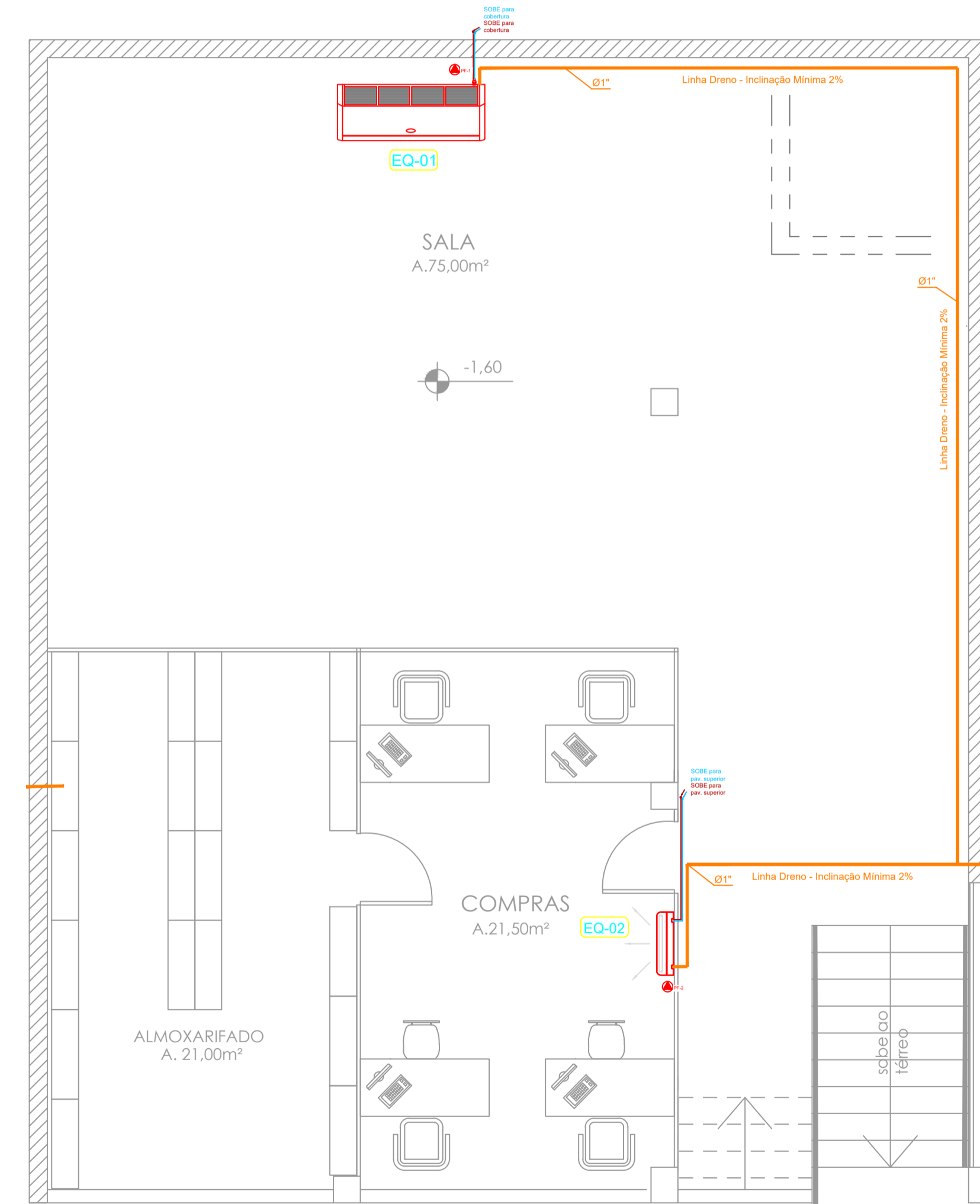
SECRETARIA MUNICIPAL DA FAZENDA - SANT'ANA DO LIVRAMENTO - RS

AR CONDICINADO

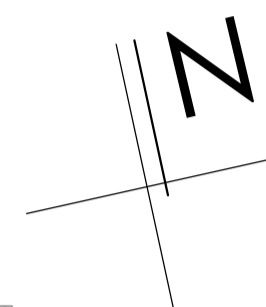
SIMBOLOGIA

-  DRENO PVC
-  PONTO DE DRENAGEM / RALO
-  PONTO DE ENERGIA/FORÇA
-  TUBULAÇÃO FRIGORÍGENA - GÁS
-  TUBULAÇÃO FRIGORÍGENA - LÍQUIDO

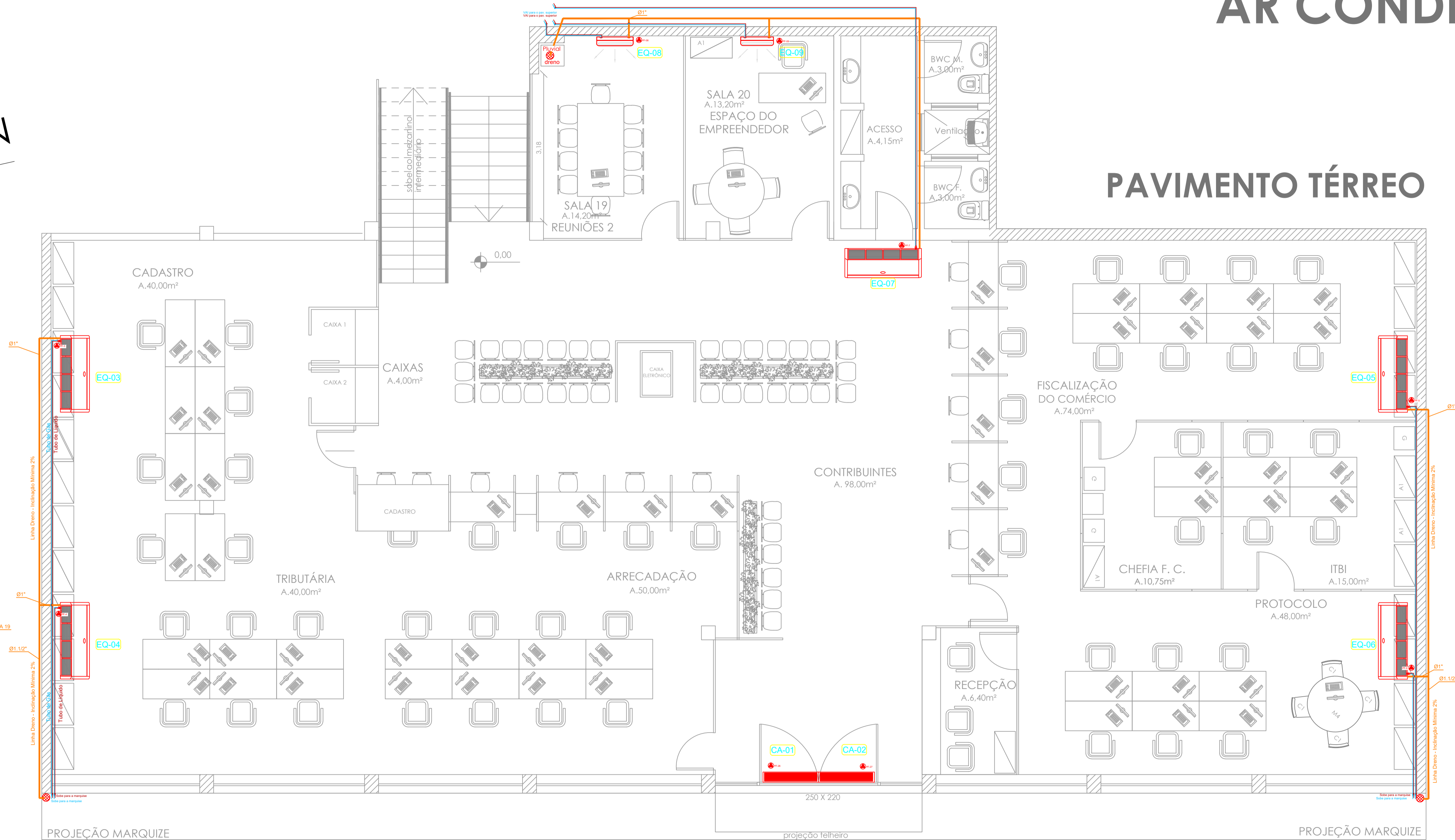
SUBSOLO



SUBSOLO -1,60
A. 139,14m²



PAVIMENTO TÉRREO



PAVIMENTO TÉRREO
A. 415,10m²



PREFEITURA MUNICIPAL DE SANT'ANA DO LIVRAMENTO
PREFEITA MUNICIPAL: ANA LUIZA MOURA TAROUÇO

SECRETARIA MUNICIPAL DA FAZENDA
SEFAZ
SECRETÁRIA DA FAZENDA: ANA GISELA MIRAHIL ALVAREZ

REFORMA - SEDE SECRETARIA DA FAZENDA
CLIMATIZAÇÃO

ENDEREÇO: Rua Brigadeiro Canabarro, 740
CEP: 97.573-570

ÁREA TOTAL:
1.144,84m²

RESPONSÁVEL TÉCNICO:


Engenheiro Civil
Miguel Ângelo Peres Pereira
CREA RS 107435

ESCALA: 1:50

DATA: 23/04/2024

PRANCHA: AC-01